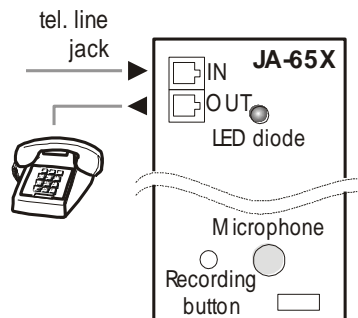


The JA-65X digital communicator is designed for JA-63 and JA-65 alarm control panels. If the 65X module is installed, the control panel can communicate with a Monitoring Station, send voice messages, SMS messages and dial a numeric Pager as well as communicate with a remote PC. A standard analog telephone line (type TNV 1-3) must be connected to the module for these functions.

1 Installation of the digital telephone communicator

- Use the provided telephone cable to connect the telephone line to the IN jack on the X module (see diagram)
- Connect a telephone, fax or other phone operated device to the OUT jack, marked with a phone symbol
- When the control panel is in normal stand-by mode, the phone line and any attached device will operate as normal



Note: The communicator must be plugged directly to a telephone line socket. All other devices (telephone, facsimile machine, modem etc.) should be connected to the communicator output.

2 Voice & SMS messages setting

A control panel equipped with the X module can automatically send 2 voice and 5 short text messages (or dial a Pager). The most convenient programming of the dialer is via a connected PC using the Comlink software. Programming can also be performed manually from the keypad:

- Enter the programming mode (**F 0 Service Code**, factory default = 6060), indicated by „P“
- Any unfinished programming sequence can be terminated by pressing the **N** key.
- **To exit the programming mode, press the N key** („P“ will turn off). If any fault is indicated when you try to exit the programming mode, the control panel will inform you about the problem.
- Telephone numbers and messages can also be set up in the User Mode when enabled (see installation manual of the control panel).

2.1 Telephone numbers for voice message sending sequence: 7xxx...xxFy

Store telephone numbers for voice message by entering:
7 xx... xx F y

where:

- xx...xx** = telephone number
- y** = memory number from 1 to 4

A telephone number can have a maximum of 16 digits. A **pause** can be entered by **F0**

Example: to store tel. number 0 123456 to memory no. 2 enter:
7 0 F0 12345 F2

Note: enter a pause (F0) after the last digit of a **number which is calling a mobile phone**. This way the number will be called only once and the dialer will not check the line signals (some mobile phone systems do not generate standard telephone line signals).

To delete a telephone number enter: 7 F0 Fy

where:

- y** = memory number from 1 to 4

note: entering **7 F0 F0** will erase all tel. numbers, including the SMS settings

When activated, the dialer will disengage all other devices hooked up to the phone line. It will then, one by one, call all programmed numbers and play the user recorded message which corresponds to the event. If the dialer makes a successful connection to a programmed number, it will not call that number again. If the number is busy, the dialer will make 3 more attempts to call it. Empty tel. number memories are skipped. If all memories are empty, the dialer is completely disabled. If the dialer is also programmed to communicate with a monitoring station, the data will first be sent to the monitoring station.

Factory default setting: all telephone numbers are deleted.

2.2 Automatic SMS sending sequence: 7xxx...xxF5

If Jablotron's SMS server service is provided in your country (check with your distributor), the following setting allows the control panel to send alarm text messages (SMS) automatically to a desired mobile phone:

7 xx...x F9 yy...y F7 00F9 F7zz...z F5

where:

- xx...x** = telephone number of the SMS server (check with your distributor if this service is provided in your country)
- F9** = separator (recognition of server's reaction)
- yy...y** = mobile phone number (where the SMS should be sent to)
- F7** = event code separator
- 00F9** = automatic event code – control panel will insert there a digital code representing the alarm (depends on setting in section 2.4)
- F7** = ID separator
- zz...z** = optional ID number which will be sent as a part of the SMS (ending). ID distinguishes which alarm system sent the SMS). If ID is not required, do not enter it
- F5** = storing of the sequence to memory 5 (32 digits can be stored to memory 5 as a maximum - separators F9 and F7 takes only 1 digit each).

How the SMS server works: when activated, the control panel dials the SMS server. After the connection is established, it sends telephone number of the mobile phone, to which the SMS should be sent. Then the control panel specifies what happened by a digital code and in the end the ID number is transferred (if programmed). In this moment the SMS server makes corresponding text message and this message is sent to the GSM network.

Example: If SMS server number is 483559876, SMS should be sent to number 606123456 and ID number of the installation is 41 enter: **7 483559876 F9 606123456 F7 00F9 F7 41 F5**

Deleting of automatic SMS sending – to erase SMS sending enter: **7 F0 F5**

Note: memory 5 can also be used to dial a Pager instead of SMS sending. **To dial a Pager enter 7 xx..x F9 zzz...z F5** where xx..x is number of the provider, zz...z is number of the pager and code of the message (check with a local Pager provider for details). Pause in the dialing can be entered with F0, with F7 and with F8. Pager dialing can be deleted with 7 F0 F5.

Factory default setting: SMS sending (Pager dialing) is erased.

2.3 Voice message(s) recording sequence: 8x

You can record two different voice messages (10 sec. each). Depending on the setting in section 2.4, a particular message will be sent under different situations. Recording of the messages:

- a) **enter 85** on the keypad
- b) **press and hold push button** on the X module
- c) **speak** towards the module (max. 10 s)
- d) **release the button**, message will play back

This results in the recording of message number 1. **To record message 2 enter 86** in step a)

If you prefer sending only one, but longer, message (20 sec.), record message by entering 84 in step a). By programming as described in section 2.4 you can specify which alarms will trigger the sending of a message.

Notes:

- *Make the messages brief and clear. The dialer repeats the message to each called number for 40 seconds.*
- *The voice messages are stored in non-volatile memory and can be changed when ever you want to by repeating the above steps.*
- *The existing messages can be played by momentarily pressing the push button on the X module (or by entering F9 while in stand by mode).*

2.4 Triggering of voice and SMS messages sending sequences: 9 y x

With sequences 91x to 95x you can select which alarms will trigger the telephone dialer to call and what will be sent.

Enter: **9 y x**

where:

y	Alarm	x	reaction
1	Panic – silent	0	no reaction
2	Intruder	1	voice1 and SMS
3	Fire	2	voice 2 only
4	Tampering	3	SMS only
5	Technical trouble		

Notes:

- *Final texts of alarm SMS are generated by the SMS server (providers computer) – based on the digital code sent by the alarm system (check with provider for more details)*
- *If only one long voice message was recorded by using code 84 as described in section 2.3, then this message will be sent when x=1 or x=2*
- *Voice messages are sent step by step to all telephone numbers programmed as described in section 2.1*
- *SMS message is sent to a mobile phone number programmed as described in section 2.2*

Example: if the dialer should send an SMS and voice message 1 when intruder or panic alarm is triggered, voice message 2 in the case of fire and only an SMS in the case of technical alarm, enter: 911 921 932 943

Factory default setting: all alarms will trigger sending of voice message 1 and SMS (911, 921, 931, 941, 951).

2.5 Dialing method sequence: 9 0 x

Enter:

- 9 0 1** for **tone** dialing
- 9 0 0** for **pulse** dialing (this option is blocked for some countries)

Note: this dialing method setting is also valid for Central monitoring station communications.

Factory default: tone dialing

2.6 Telephone line checking sequence: 9 9 x

If this function is enabled, the dialer will check regularly if the telephone line is ready to make a phone call. If the line is not ready for more than 15 minutes, the keypad will indicate a telephone line failure (failure L). A non-working telephone line or a phone conversation or Internet connection longer than 15 minutes can cause a fault.

options:

- 9 9 1** checking **enabled**
- 9 9 0** checking **disabled**

Note: this setting is also valid when the dialer is used for Monitoring station communications as well as remote PC access

Factory default setting: checking disabled

2.7 Telephone dialer testing sequence: 8 9

After entering code **89** the dialer will call all programmed numbers and will play voice message 2. It will also send a SMS message if programmed. The telephone line signals will be audible from the control panel's built in speaker during the test (if the dialer is triggered by an alarm in normal operation, it will call silently).

If you prefer testing with voice message 1 enter code 88. Testing can be terminated with the **N** key.

3 To enable a remote computer to dial in

When the user or installer wants to dial in to the installation from their computer or a remote JA-60E keypad via a JA-60U modem (see section 6), the following parameters should be programmed.

The most convenient programming is via a connected PC using the Comlink software. Programming can also be performed manually:

- **Enter the programming** mode when disarmed (**F 0 Service Code**, factory default 6060), indicated by a "P"
- Any unfinished programming sequence can be terminated by the **N** key.
- **To exit the programming**, press the **N** key ("P" will turn off).

Dialing in parameters

Function	sequence	options	factory d.
Incoming call reaction	0 5 x	0=never 1= second call 2-6 = after ring No. 2 - No.6	disabled
Remote access code (8 digits)	0 7 xxxxxxxx	any 8 digits code	00000000

3.1 Reaction to an incoming call sequence: 05

This sequence sets how the communicator will react to incoming calls on the telephone line. This setting is important for remote access. Enter: **0 5 x**

where: x = 0 - never answer

- 1** - answer after second call = after 1 or 2 rings are detected, there must be a pause of 10 - 45 seconds. The dialer will then answer on the very first ring of the second call. This setting can be used to bypass an answering or facsimile machine connected to the same line. This "Second Call" feature is supported by the Comlink software and also by the JA-60E keypad.
- 2 to 6** - answer after 2nd to 6th ring

Notes: Remote access connection can also be enabled by the alarm system user (regardless of the above setting) by entering 89 while in the user mode, when the phone rings. If you use another telephone set on the same telephone line, it should be switched to the tone dial mode.

Factory setting: 0 = never answer

3.2 Remote access code setting

sequence: 07

In order to access the panel remotely, it is necessary to authorize the access with an 8-digit access code. This code is compared with the one programmed in the control panel. If the caller tries to access the panel with another code, the connection will be terminated immediately. A wrong code alarm will be triggered on the control panel after the 5th unsuccessful attempt to dial in. Store your access code to the control panel by entering: **07 xxxxxxxx**

where:

x x x - any 8 digits access code

Factory setting: 00000000

4 Central monitoring station communication setting

This part of the manual is intended only for specialists involved in monitoring. We recommend to use a computer equipped with Comlink program for complete setting of the monitoring station communication.

Changes of the setting can also be performed manually using the keypad:

- Enter programming mode when disarmed (*F 0* Service Code, factory default 6060), indicated by a "P".

To exit programming press the N key ("P" will turn off).

Central monitoring station communication parameters

Sequence	Description	Factory default setting	
0 001 xx to 0 198 xx	Reporting codes table (see part 5) where: x= 0 – 9, F0 = A_n, F1 = B_n, F2 = C_n, F3 = D_n, F4 = E_n, F5 = F_n if 00 is set, the event is not reported	00	For all events
0 2 xxxx	Account ID code (4 digits, for 3/1 and 3/2 formats the structure is 0xxx) x = 0 – 9 (hexadecimal codes can be used too - see above)	0000	
0 3 xy	Protocol x : 0 = Ademco Slow 1 = Ademco Fast 2 = Telemax 3 = Franklin 4 = Radionics 2300 5 = Radionics 1400 6 = DTMF 2300 7 = Surgard 8 = Ademco Express 9 = Contact ID Format y : 0 = 3/1 (xxx R) 1 = 3/2 (xxx rc) 2 = 4/1/1 (xxxx Rn) 3 = 4/2 (xxxx rc)	90	Contact ID
0 4 x	Re-dialing pause, x= 1 – 9 (x 10 min.)	1	10 minutes
0 6 xx..xFy	CMS phone numbers xx...x to memory y (1 and 2), pause = F0		erased
0 9 6060	Communicator reset to factory default settings		

Notes:

Some of the protocols are not standardized and some manufacturers of Monitoring Station receivers use different parameters in some of their protocols. Therefore Jablotron cannot guarantee full compatibility with all Central Monitoring Station receivers.

If the connection with the Monitoring Station is not available, the events are queued in the communicator's memory and are transmitted in one burst as soon as the connection is established. All events are reported to the Monitoring Station in the same order as they happened.

Once communication has started, it can not be interrupted unless the control panel is switched to the programming or to the user mode. For example, if the user causes a false alarm and then cancels it, both events are sent to Monitoring Station.

Events occurring while the control panel is in the programming or user mode are reported to the Monitoring Station after the closing of these modes. (They are stored in the memory and reported together with reporting codes describing the change of operation modes.)

When the dialer is activated, the communication to the monitoring station has the highest priority (voice and SMS messages are sent later with lower priority). A User or Installer can interrupt the digital dialer communication by entering the User mode or Programming mode. Reset of the control panel has no influence to the digital communicator's settings (it is reported to the Monitoring station as an event).

The RESET of the digital communicator itself (sequence 0 9 6060), the change of the Monitoring Station's telephone numbers, the change of an account number code or the change of a format setting will erase all the reporting codes queued in the communicator's memory. However the events remain stored in the control panel's internal memory.

Jablotron recommends use of the MS-350 monitoring station with ComGuard SW.

4.1 Reporting codes setting

sequences: 00 and 01

These sequences can be used to program the report codes for all possible events. Depending on the used protocol and format, different amounts of data should be entered. The complete report code programming table is shown in section 5. The setting sequence structure is as follows: **0 x x x r c**

where:

- xxx** = event number (from 001 to 198)
- rc** = report code (two digits). For 3/1 and 4/1/1 formats only the first digit of the report code is used (R). Codes should be entered in a hexadecimal format, with numbers higher than 9 beginning with the F key: **A_n = F0 B_n = F1 C_n = F2 D_n = F3 E_n = F4 F_n = F5**

If the reporting code 00 is programmed, the event will not be reported to the Monitoring Station.

Notes:

- Abbreviation "Rc" is used in the report code programming table for the major events group. Only the first digit of this group of codes is transmitted when formats 3/1 or 4/1/1 are used. Other formats use both digits of the "Rc" and "rc" report codes.
- The Contact ID (CID) is an automatic protocol. If you enter any report code other than zero for a major event (Rc), all events of this type will be transmitted automatically including all details regarding the event source. Internal structure of the CID protocol is shown in part 1.1. This protocol provides the most in-depth data for the monitoring station and its use is recommended by Jablotron.

- The Surgard protocol has 4/2 structure plus one more digit which is generated automatically (see 4.3)
- If the control panel is split and only one section is armed, then a partial arming report code is sent. If all sections are armed, a complete arming report code is sent. If the system was completely armed and only one section is disarmed, the disarming report code will be sent and then it will be followed by the partial arming report code.
- The pulse formats are not capable to report zero and numbers above 15. For this reason events in zone 16 or in a subsystem are reported to the Monitoring Station as events in zone 10. This means that from the point of view of the monitoring station zone 10 also covers zone 16 and the subsystem if used. This problem does not exist in the CID protocol.
- If the system is arming while there is a bypass, partial arming will be reported to the CMS (also stored to the internal memory)

Factory setting: 00 for all events

4.2 Account ID code setting

sequence: **02**

This sequence is used for the alarm system identification by a Monitoring Station. The sequence structure: **02 x x x x**

where:

xxxx – account ID code (x are numbers from 0 to 9 or hexadecimals).

When using only three-digit codes (formats 3/1 and 3/2) enter a zero in the first position. The communicator will then ignore it (example - 0123)

Note: Changing of the account code erases the internal communicator's memory of non reported events and sends a „Reset“ reporting code (051) to the Monitoring Station. If pulse formats are used, zero is transmitted as **A_h**

Factory setting: 0000

4.3 Protocol and Format setting

sequence: **03**

This sequence is used to select the communication protocol and format. Its structure is as follows: **03 x y**

where:

x - protocol (0 – 9, see table bellow)
y - format (0 - 3 see table on right)

Notes:

Protocols						
x	Name	Hand-shake	Data	Kiss off	Speed	format
0	Ademco Slow (Silent Knight)	1400Hz	1900Hz	1400Hz	10bps	Next table
1	Ademco Fast	1400Hz	1900Hz	1400Hz	14bps	Next table
2	Telex	2100Hz	1650Hz	2100Hz	10bps	Next table
3	Franklin	2300Hz	1800Hz	2300Hz	20bps	Next table
4	Radionics 2300	2300Hz	1800Hz	2300Hz	40bps	Next table
5	Radionics 1400	1400Hz	1900Hz	1400Hz	40bps	Next table
6	DTMF 2300	2300Hz	DTMF	2300Hz	DTMF	Next table
7	Surgard*	2300Hz	DTMF	2300Hz	DTMF	4/3
8	Ademco express*	Dual tone	DTMF	1400Hz	DTMF	4ID/2
9	Contact ID*	Dual tone	DTMF	1400Hz	DTMF	CID

* fixed format, "y" is arbitrary (0 is recommended)

Formats			
y	format	reports	structure
0	3/1	Major events only	xxx R
1	3/2	All events	xxx rc
2	4/1/1	Major events with autom. source identification	xxxx Rn
3	4/2	All events	xxxx rc

xxxx = account number

R = major event code (only first digit counts)

rc = detailed event code (two digits)

n = source identification (generated automatically)

Surgard protocol has structure: xxxx E rc , where E is a group identifier (generated automatically)		
E	Event	Note
1	Fire	
2	Panic	
3	Alarm	General
4	Arming	Incl. Partial
5	Disarming	
6	Failure	Power failure, RF jamming ...
8	Report	Enter/Exit service mode ...
9	Restore	End of alarm, panic ...
A	Test	24 hour test

- Some Monitoring Station receivers do not support all formats.
- Logic of the format marking - 4/2 means that an account code has 4 digits and an event report code has 2 digits.
- Changing of a format erases the internal communicator's memory of non reported events and sends a "Reset" reporting code (051) to the Monitoring Station.

Factory setting: 90 (Contact ID)

4.4 Re-dialing pause setting

sequence: **04**

If a dialer is triggered it attempts to make a connection (alternating between the primary and the backup telephone number). If it is not possible to make a connection after 8 attempts, a pause is initiated. After this pause the dialer will attempt again. If any event triggers the communicator during the pause, the pause ends immediately. The pause length can be set in the following way: **0 4 x**

where:

x – time multiplied by 10 minutes (from 1 to 9, example 3 = 30 minutes)

Factory setting: 1 = 10 min.

4.5 CMS phone number entering

sequence: **06**

Central monitoring station modem phone numbers can be stored by entering the following sequence: **0 6 x x x F y**

where:

xx...x = Central Monitoring Station phone number (up to 16 digits)

y = **1** for primary phone number memory
2 for back up phone number memory

Pause (3 sec.) can be inserted into the telephone number by entering **F0**. It is also possible to insert the * tone by **F7** or the # tone by **F8** if requested for DTMF dialing.

Example: number 02 123456 as main Monitoring Station number is entered with 06 02 F0 123456 F1.

Phone number erasing: 0 6 F 0 F y

where:

y = **1** to erase the primary telephone number
2 to erase the back up telephone number

Note: Changing of a phone number erases the internal communicator's memory of non reported events and sends a "Reset" reporting code (051) to the Monitoring Station.

Factory setting: both numbers are erased

4.6 Digital communicator reset

sequence: **096060**

By entering this code the factory default settings of all parameters are restored in the digital dialer. All phone numbers, reporting codes, account codes etc. are erased. This reset doesn't effect the voice dialer's settings. The reset sequence is: **0 9 6060**

Note: All communicator settings are stored in non-volatile memory and remain unchanged even after switching off the power supply.

5 Central Monitoring station report codes table

A two digit report code **rc** (00 to FFh) can be set for every event. If 00 is programmed as a report code, that event will not be reported.

The major events group is marked by **Rc**. When formats 3/1 or 4/1/1 are used, only 16 of these major events are reported to the Monitoring Station. This makes it necessary to only program the **R** digits. The second digit does not count. Zero can not be used in the pulse protocols. For Contact ID protocol, program code 11 for major events (**Rc**) which you want to report and the system will generate all details regarding the event automatically including the events source details (see part 5.1).

N.	Event	Code
001	Arming with remote control N.1	Rc
002	Arming with remote control N.2	Rc
003	Arming with remote control N.3	Rc
004	Arming with remote control N.4	Rc
005	Arming with remote control N.5	Rc
006	Arming with remote control N.6	Rc
007	Arming with remote control N.7	Rc
008	Arming with remote control N.8	Rc
009	Arming with master code	Rc
010	Arming with user code N.1	Rc
011	Arming with user code N.2	Rc
012	Arming with user code N.3	Rc
013	Arming with user code N.4	Rc
014	Arming with user code N.5	Rc
015	Arming with user code N.6	Rc
016	Arming with user code N.7	Rc
017	Arming with user code N.8	Rc
018	Arming with user code N.9	Rc
019	Arming with user code N.10	Rc
020	Arming with user code N.11	Rc
021	Arming with user code N.12	Rc
022	Arming with user code N.13	Rc
023	Arming with user code N.14	Rc
024	Partial arming	Rc
025	Quick arming without code	Rc
026	Disarming with remote control N.1	Rc
027	Disarming with remote control N.2	Rc
028	Disarming with remote control N.3	Rc
029	Disarming with remote control N.4	rc
030	Disarming with remote control N.5	rc
031	Disarming with remote control N.6	rc
032	Disarming with remote control N.7	rc
033	Disarming with remote control N.8	rc
034	Disarming with master code	rc
035	Disarming with user code N.1	rc
036	Disarming with user code N.2	rc
037	Disarming with user code N.3	rc
038	Disarming with user code N.4	rc
039	Disarming with user code N.5	rc
040	Disarming with user code N.6	rc
041	Disarming with user code N.7	rc
042	Disarming with user code N.8	rc
043	Disarming with user code N.9	rc
044	Disarming with user code N.10	rc
045	Disarming with user code N.11	rc
046	Disarming with user code N.12	rc
047	Disarming with user code N.13	rc
048	Disarming with user code N.14	rc
049	Entering of the programming mode	Rc
050	Exiting the programming mode	Rc
051	Communicator Reset	Rc
052	Initial AC powering	Rc
053	Alarm after initial AC powering	Rc
054	General battery trouble	Rc
055	General battery trouble end	Rc
056	Control panel battery trouble	Rc
057	Control panel battery trouble end	Rc
058	Zone alarm 1	Rc
059	Zone alarm 2	rc
060	Zone alarm 3	rc
061	Zone alarm 4	rc
062	Zone alarm 5	rc
063	Zone alarm 6	rc
064	Zone alarm 7	rc
065	Zone alarm 8	rc
066	Zone alarm 9	rc

067	Zone alarm 10	rc
068	Zone alarm 11	rc
069	Zone alarm 12	rc
070	Zone alarm 13	rc
071	Zone alarm 14	rc
072	Zone alarm 15	rc
073	Zone alarm 16	rc
074	Wrong access code alarm	Rc
075	Zone tamper 1	Rc
076	Zone tamper 2	rc
077	Zone tamper 3	rc
078	Zone tamper 4	rc
079	Zone tamper 5	rc
080	Zone tamper 6	rc
081	Zone tamper 7	rc
082	Zone tamper 8	rc
083	Zone tamper 9	rc
084	Zone tamper 10	rc
085	Zone tamper 11	rc
086	Zone tamper 12	rc
087	Zone tamper 13	Rc
088	Zone tamper 14	Rc
089	Zone tamper 15	Rc
090	Zone tamper 16	Rc
091	Keypad tamper	Rc
092	Control panel tamper	Rc
093	Siren tamper	Rc
094	Zone fault 1	Rc
095	Zone fault 2	Rc
096	Zone fault 3	Rc
097	Zone fault 4	Rc
098	Zone fault 5	Rc
099	Zone fault 6	Rc
100	Zone fault 7	Rc
101	Zone fault 8	Rc
102	Zone fault 9	Rc
103	Zone fault 10	Rc
104	Zone fault 11	Rc
105	Zone fault 12	Rc
106	Zone fault 13	Rc
107	Zone fault 14	Rc
108	Zone fault 15	Rc
109	Zone fault 16	Rc
110	Keypad fault	Rc
111	Control panel fault	Rc
112	Siren fault	Rc
113	Zone alarm end 1	Rc
114	Zone alarm end 2	Rc
115	Zone alarm end 3	Rc
116	Zone alarm end 4	Rc
117	Zone alarm end 5	Rc
118	Zone alarm end 6	Rc
119	Zone alarm end 7	Rc
120	Zone alarm end 8	Rc
121	Zone alarm end 9	Rc
122	Zone alarm end 10	Rc
123	Zone alarm end 11	Rc
124	Zone alarm end 12	Rc
125	Zone alarm end 13	Rc
126	Zone alarm end 14	Rc
127	Zone alarm end 15	Rc
128	Zone alarm end 16	Rc
129	Zone tamper end 1	Rc
130	Zone tamper end 2	Rc
131	Zone tamper end 3	Rc
132	Zone tamper end 4	Rc
133	Zone tamper end 5	Rc
134	Zone tamper end 6	Rc

135	Zone tamper end 7	Rc
136	Zone tamper end 8	Rc
137	Zone tamper end 9	Rc
138	Zone tamper end 10	Rc
139	Zone tamper end 11	Rc
140	Zone tamper end 12	Rc
141	Zone tamper end 13	Rc
142	Zone tamper end 14	Rc
143	Zone tamper end 15	Rc
144	Zone tamper end 16	Rc
145	Keypad tamper end	Rc
146	Control panel tamper end	Rc
147	Siren tamper end	Rc
148	Zone fault end 1	Rc
149	Zone fault end 2	Rc
150	Zone fault end 3	Rc
151	Zone fault end 4	Rc
152	Zone fault end 5	Rc
153	Zone fault end 6	Rc
154	Zone fault end 7	Rc
155	Zone fault end 8	Rc
156	Zone fault end 9	Rc
157	Zone fault end 10	Rc
158	Zone fault end 11	rc
159	Zone fault end 12	rc
160	Zone fault end 13	rc
161	Zone fault end 14	rc
162	Zone fault end 15	rc
163	Zone fault end 16	rc
164	Keypad fault end	rc
165	Control panel fault end	rc
166	Siren fault end	rc
167	Telephone line trouble	Rc
168	Telephone line trouble end	Rc
169	Control panel failure	Rc
170	End of control panel failure	Rc
171	Periodic test (24 hr. from last com.)	Rc
172	AC failure (in 30 min. after failure)	Rc
173	AC failure end	Rc
174	RF jamming	Rc
175	Wrong code alarm end	Rc
176	RF jamming end	Rc
177	Panic alarm from remote control N.1	Rc
178	Panic alarm from remote control N.2	rc
179	Panic alarm from remote control N.3	rc
180	Panic alarm from remote control N.4	rc
181	Panic alarm from remote control N.5	rc
182	Panic alarm from remote control N.6	rc
183	Panic alarm from remote control N.7	rc
184	Panic alarm from remote control N.8	rc
185	Master code panic alarm	rc
186	User code panic alarm	rc
187	Panic alarm end from rem. contr. 1	Rc
188	Panic alarm end from rem. control N.2	rc
189	Panic alarm end from rem. control N.3	rc
190	Panic alarm end from rem. control N.4	rc
191	Panic alarm end from rem. control N.5	rc
192	Panic alarm end from rem. control N.6	rc
193	Panic alarm end from rem. control N.7	rc
194	Panic alarm end from rem. control N.8	rc
195	Master code panic alarm end	rc
196	User code panic alarm end	rc
197	Subsystem panic alarm	Rc
198	Subsystem panic alarm end	Rc

5.1 Internal structure of Contact ID protocol

The data in the CID protocol has following standardized structure:

XXXX 18 Q XYZ 01 CCC

where **XXXX** is the account code of the installation, **18** is the code identification (identical for all events), **Q** is a number from 1 to 3, **XYZ** is the event number, **01** is the subsystem number, **CCC** event source details (see the table below).

JA-63/65 event no.	Q XYZ	Event description	possible source in JA-63 or JA-65						
			C	S	c	A	J	L	d
058	1 110	Fire alarm		4			4		
113	3 110	Fire alarm end		4			4		
177	1 120	Panic alarm	4		4				4
058	1 120	Panic alarm from a detector		4					
197	1 120	Panic alarm in the subsystem					4		
187	3 120	End of the panic alarm	4		4				4
113	3 120	End of the panic alarm from a detector		4					
198	3 120	End of the subsystem panic alarm					4		
058	1 130	Intruder alarm in an instant zone		4					
113	3 130	End of the intruder alarm in an instant zone		4					
058	1 134	Intruder alarm in a delayed zone		4					
113	3 134	End of the intruder alarm in a delayed zone		4					
075	1 137	System tamper alarm	4		4	4	4		4
129	3 137	All system tampers OK	4		4	4	4		4
074	1 138	Wrong access code alarm	4		4			4	4
175	3 138	End of a wrong access code alarm	4		4			4	4
053	1 140	Alarm after powering of the control panel	4						
075	1 144	Detector tamper alarm		4					
129	3 144	All detector tampers OK		4					
094	1 300	Failure (blown fuse in control panel or other general failure)	4		4	4	4	4	4
052	3 300	Control panel powering	4						
148	3 300	No failure in the system	4		4	4	4	4	4
172	1 301	AC failure	4						
173	3 301	AC switched on	4						
054	1 302	Problem with power in an item			4	4	4		
056	1 302	Back up battery failure in the control panel	4						
057	3 302	End of the back up battery failure	4						
055	3 302	End of the problem with power in the item			4	4	4		
051	1 305	Reset	4					4	
049	1 306	Entering of programming or user mode	4		4				4
050	3 306	End of programming or user mode	4		4				4
058	1 330	Subsystem alarm					4		
167	1 354	Tel. line failure							4
169	1 354	Failure of communication in the digital bus							4
168	3 354	End of tel. line failure							4
170	3 354	End of a communication failure in the digital bus							4
174	1 355	RF jamming	4						
176	3 355	End of RF jamming	4						
094	1 380	Detector failure		4					
148	3 380	End of all detector failures		4					
094	1 381	Wireless item communication lost		4	4	4	4		
148	3 381	Wireless item communication reestablished		4	4	4	4		
054	1 384	Detector power problem		4					
055	3 384	End of the detector power problem		4					
026	1 401	Disarming	4		4				4
001	3 401	Complete arming	4		4				4
024	3 402	Partial (Home) arming	4		4				4
025	3 408	No code arming	4		4				4
171	1 602	Monitoring station communication testing (in 24 hr.)						4	

Event sources specification in the Contact ID protocol:

JA-63/JA-65 source	mark	code CCC
Wireless sensor	S	001 to 016
Sensor		201 to 216
Controller	c	401 to 408
User code		501 to 514
Control panel	C	701
Wireless siren	A	711
Sub control panel	J	721
Tel. Line	L	731

Digital bus	D	741
-------------	---	-----

6 Remote access to the system

The JA-60U modem can be used for the remote connection of the control panel to a personal computer with Comlink software or a remote JA-60E keypad using a standard telephone line. It is necessary to know the remote control access code for the system (see 3.2).

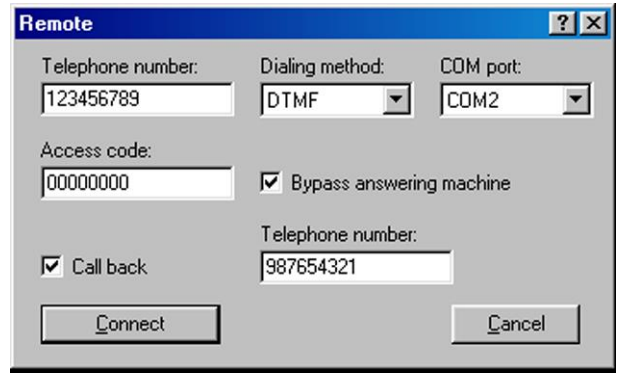
Details on how to use the JA-60E keypad remotely can be found in the JA-60E manual.

A personal computer connected remotely works the same way as when it is wired directly to the control panel (see also installation manual of the control panel). Only downloading or uploading of extensive data (like event list downloading, digital communicator setting etc.) takes a slightly longer time compared to a direct PC connection to the control panel.

6.1 Establishing connection with a remote control panel by computer

Start Comlink SW on a computer equipped with a JA-60U modem. The dialing dialog requires the following data:

- telephone number of the called control panel
- dialing method (tone or pulse)
- control panel's remote access code (must be identical as code programmed in the control panel - 8 digits)
- optional bypassing of answering machine (if this option was programmed in the control panel); if the connection can not be established, try to enter "space" after the last digit
- optional call back feature, if you want the control panel to call your computer back (that way the end user's telephone will be charged for the remote access communication)



"Dialing in" dialog of the Comlink software

7 Specification

Digital communication to:

- a monitoring station,
- 5 SMS messages or Pager dialing,
- 2 voice messages, modem communication with a remote PC (ComLink SW + JA-60U modem),
- remote keypad access with JA-60E and JA-60U

Monitoring station formats

Contact ID, Ademco, Telemax, Franklin, Radionics, SurGard, DTMF2300, (198 reports codes)

can be connected to analogue interfaces TBR 21/1998, EG 201 121 V1.13/2000, AS/ACIF S002/2001 (Australia)



Hereby, Jablotron Ltd., declares that this JA-65X is in compliance with the essential requirements and other relevant provisions of Directive 1999/5/EC. Original of the conformity assessment can be found at the web page www.jablotron.cz, section Technical support.



Note: Although this product does not contain any harmful materials we suggest you to return the product to the dealer or directly to the producer after usage.